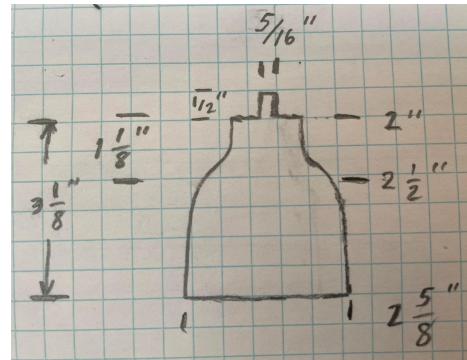


CHRISTMAS GNOME INSTRUCTIONS BY CHRIS THOMPSON



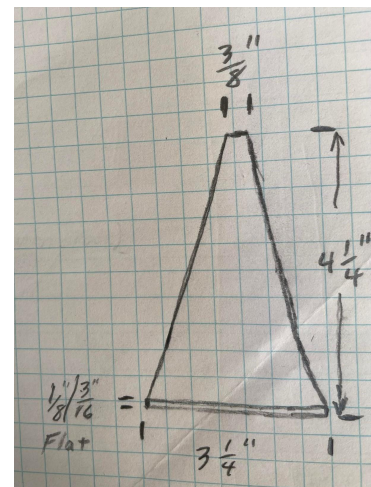
GNOME BODY:

- Wood blank 3" x 3" x 4"
- Chuck it up between live center and tailstock center
- Turn a cylinder and begin shaping the body
- Make the pin on top, but sand body before final sizing of pin (so it still has some strength)
- Cut off ugly bottom of the body (I use a miter saw)



GNOME HAT:

- 3 1/4" X 3 1/4" x 4 1/4" wood blank
- Find the center of the bottom side of the hat and drill hole about 1" deep (for a screw chuck)
- Thread onto the screw chuck (bottle stopper chuck) and use the tailstock center for stability
- Turn to desired shape
- Sand
- Stain (optional)
- Apply beeswax

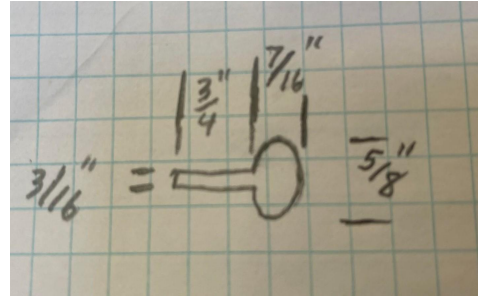


a

CHRISTMAS GNOME INSTRUCTIONS BY CHRIS THOMPSON

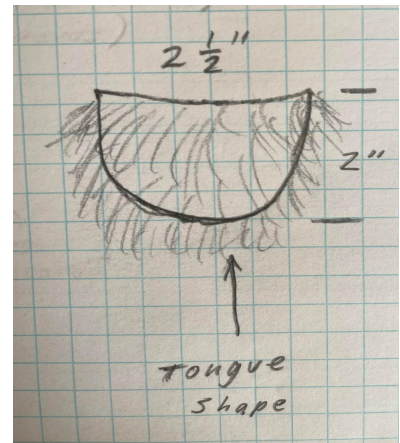
GNOME NOSE:

- $\frac{3}{4}$ " x $\frac{3}{4}$ " x $2\frac{1}{4}$ " wood blank
- I use a Nova chuck with 25mm 1" jaw set (pin jaws) to hold blank
- Shape the nose
- Sand
- Part off



ASSEMBLY:

- Put beeswax paste on the body and nose (put latex gloves on or wash hands really good afterwards)
- Drill $\frac{3}{16}$ " hole in gnome body for nose
- Cut beard to desired shape (pull fur back out of the way when cutting so it stays long on the edge)
- Cut the fur for the rim of the hat to length or just a little long
- Dry fit everything and sand where you plan on using glue (tip of hat, rim of hat, behind beard)
- Glue nose and beard
- Glue fur piece around the rim of the hat
- Glue hat to the body
- Glue the pom pom on the top of hat



Supplies Needed:

- 3" x 3" x 4" wood blank for body
- $3\frac{1}{4}$ " x $3\frac{1}{4}$ " x $4\frac{1}{4}$ " wood blank for hat
- White faux fur (find at fabric/hobby store)
- 0.75" craft pom poms
- Fur for the rim of the hat (Yarn Bee "Fur the Love" from Hobby Lobby is what I used)
- Hot glue gun and glue sticks
- Fabric scissors
- Red Stain

CHRISTMAS GNOME INSTRUCTIONS BY CHRIS THOMPSON

Note: The tools I use may be different than the tools you like to use. Bring whatever tools you want use to make these simple spindle shapes